

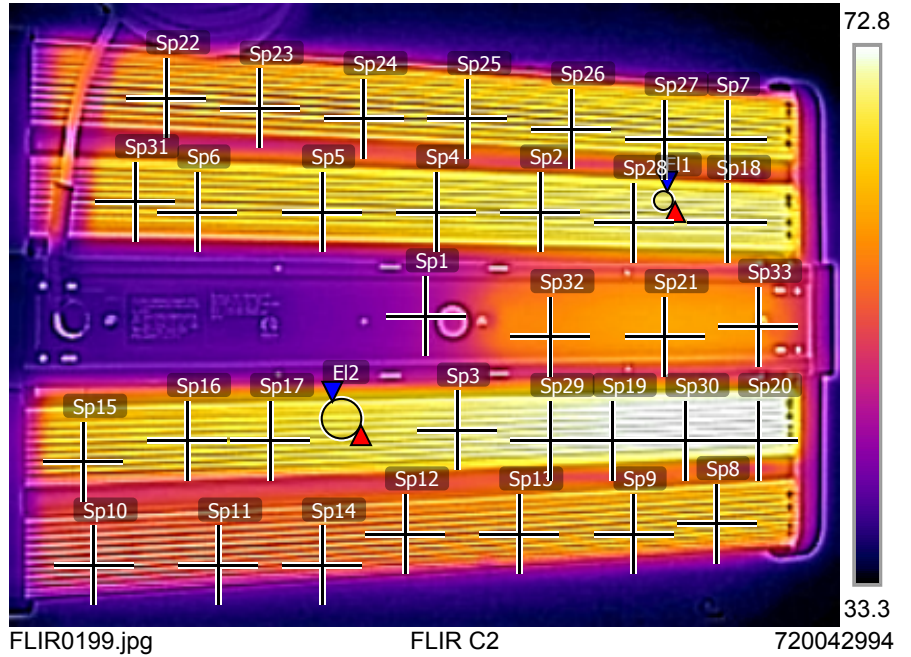
测量

E11	Max	69.2 °C
	Min	67.9 °C
	Average	68.9 °C
E12	Max	67.3 °C
	Min	66.0 °C
	Average	66.8 °C
Sp1		44.6 °C
Sp2		67.4 °C
Sp3		69.3 °C
Sp4		65.7 °C
Sp5		64.0 °C
Sp6		62.9 °C
Sp7		65.6 °C
Sp8		62.6 °C
Sp9		62.0 °C
Sp10		54.7 °C
Sp11		55.5 °C
Sp12		58.8 °C
Sp13		60.4 °C
Sp14		55.4 °C
Sp15		62.7 °C
Sp16		64.5 °C
Sp17		65.7 °C
Sp18		69.2 °C
Sp20		72.0 °C
Sp21		61.0 °C
Sp22		60.6 °C
Sp23		61.4 °C
Sp24		62.4 °C
Sp25		63.9 °C
Sp26		65.0 °C
Sp27		65.6 °C
Sp28		68.7 °C
Sp29		71.1 °C
Sp19		72.2 °C
Sp30		72.7 °C
Sp31		62.2 °C
Sp32		59.2 °C
Sp33		60.1 °C

参数

辐射率	0.8
反射温度	20 °C

2019/6/5 9:43:41



2019/6/5 9:43:41

