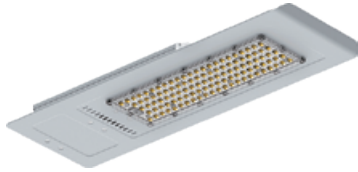


LED Road Light power box and light arm integrated design saving space and minimizing wind resistance. The lower glare of the will be sure to offer improved visual comfort, widely used in trunk roads, highways, elevated roads, urban streets, overpasses, sidewalks, etc.



Driver Info

Type:	Constant Current
Voltage:	120-277V
(options)	220-240V
Input Watts:	120W
Efficiency:	96%

LED Info

Watts:	120W
Color Temp:	2700-6500K
Color Accuracy:	>70
L70 Lifespan:	100000
Lumens:	15600
Efficacy:	130 lm/W



Technical Specifications

Listings

ENEC Listing:

The high quality European Mark for electrical products that demonstrates compliance with European standards (EN).

LM-80 Testing:

LED luminaires and LED components have been tested by an independent laboratory in accordance with IESNA LM-79 and LM-80.

Electrical

Driver:

Constant Current, Isolated, 120-277V, 50/60 Hz, 6KV surge protection

THD:

6.7% at 120
9.1% at 277V

Power Factor:

96% at 120V
94% at 277V

LED Characteristics

LED:

High performance CREE LEDs

Lifespan:

50,000-hour LED lifespan based on IES LM-80 results and TM-21 calculations

Color Consistency:

7-step MacAdam Ellipse binning to achieve consistent fixture-to-fixture color

Color Stability:

LED color temperature is warranted to shift no more than 200K in CCT over a 5 year period

Color Uniformity:

Li-tian's range of CCT (Correlated Color Temperature) follows the guidelines for the American National Standard for Specifications for the Chromaticity of Solid State Lighting (SSL) Products.

Construction

Cold Weather Starting:

Minimum starting temperature is -40°C (-40°F)

Maximum Ambient Temperature:

Suitable for use in 40°C (104°F)

Housing:

Precision extruded aluminum housing

Lens:

Clear polycarbonate lens with integrated optics.

Gaskets:

High-temperature silicone

Finish:

Formulated for high-durability and long lasting color

Green Technology:

Mercury and UV-free. RoHS compliant components.

Light Distributions:

The Type III distribution is meant to be located near the side of an area, projecting the light outward to fill the area. Ideal for roadways, general parking areas, lighting applications and where a large pool of light is required.

Mounting

Slip Fitter Mount

Support 60MM tube direct installation

Options

Lighting Control

Floodlight sensor standard, 1-10V dimming, photocell optional

Finish Color

Silver finish standard, bronze, black and white optional

Surge protector

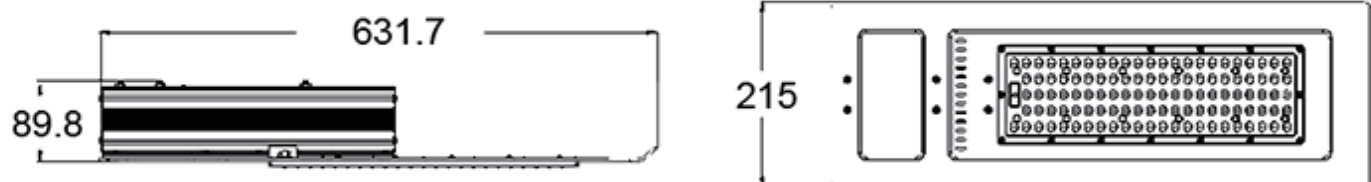
10kV surge protection upgrade

Accessories

Configurable street lamp adapter Light pole's street lamp adapter, with clear scale, 120° Angle adjustable, light as they move

Dimensions

Unit:mm



Accessories

Configurable street lamp
adapter Light pole's street lamp
adapter, with clear scale,
120°Angle adjustable, light as
they move.



Learn More

Tel: +86-760-23757187
Fax: +86-760-23757185
Website: www.ilitianled.com
ADD: Block B 4/F, No.2 Yihui 2nd Road Maohui Industry, Sisha, Henglan Town,
Zhongshan City, Guangdong Province, China.