

LED Shoebox Floodlight



LI-TIAN LIGHTING



100W



150W



200W



300W



400W

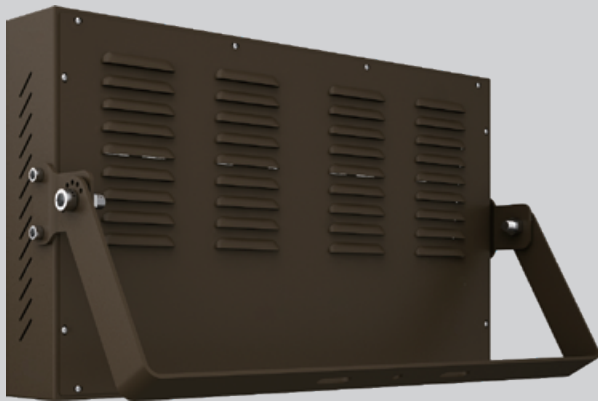
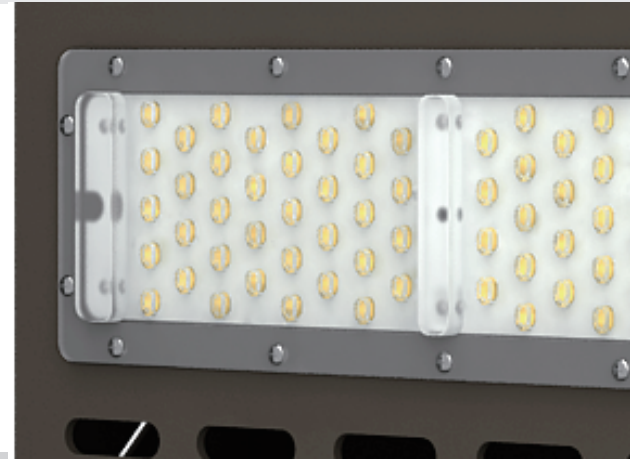


- Up to 52,000 lumens; replaces 2000W MH floodlights
- Six distributions available: 30° 60° 90° 30°x70° 60°x90° 90°x90°
- Precision optics ideal for a wide variety of applications such as illuminating large fields, tall or wide buildings and recreational parks
- Ultra efficient, up to 130 lm/W
- 100,000-Hour LED lifespan



■ Super High Efficacy
Up to 130lm/W

■ Polycarbonate Optics
Shatterproof, non-yellowing



■ Air flow technology
keeps running cool for optimal operation

■ Adjustable Arm bracket
Convenient adjustable 0-180°

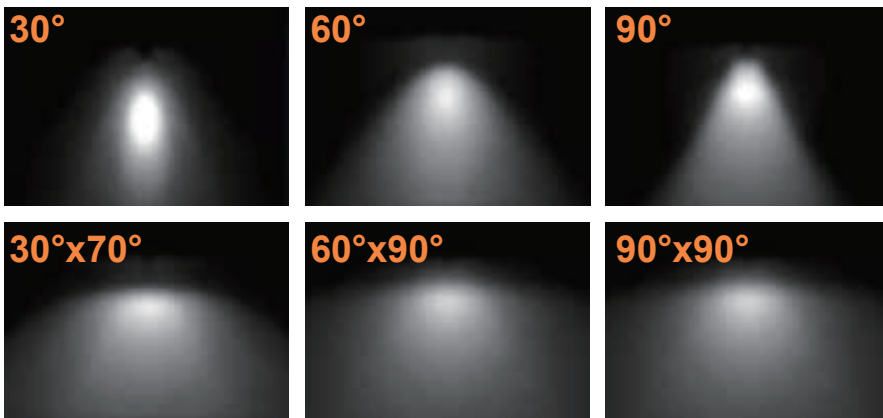


■ IP66 rating
Protected against powerful water jets

480V

- 480 volt option
The floodlight is available in 480 Volt option

- Dimmable
0-10V dimming capability



- Distributions Types
Choice of six optics cast light

- Simple Installation
Ease of ordering retrofit accessories



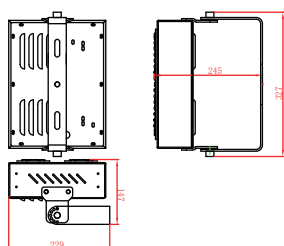
- 5-year warranty

Product Parameters

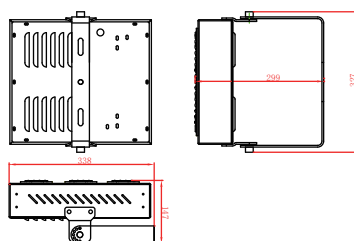
Lumens	130LM/W					
power	100W	150W	200W	300W	400W	
Color Temperature	WW-30K Warm White 3000K (70 CRI)		NW-40K Neutral White 4000K (70 CRI)		CW-50K Cool White 5000K (70 CRI)	
Distribution	30°	60°	90°	30°x70°	60°x90°	90°x90°
Voltage	UNV Universal 120-277V			HVU Universal 347-480V		
Motion sensing	N3=NEMA 3-PIN Twistlock Photocontrol Receptacle N7=NEMA 7-PIN Twistlock Photocontrol Receptacle					
Mounting	TM=Trunnion mounting SFM=Slip Fitter mounting					
Dimming controls (standard)	1-10V Dimming	Resistor Dimming	Pwm Three-in-one Dimming			
Finish	Bronze					

Product Size

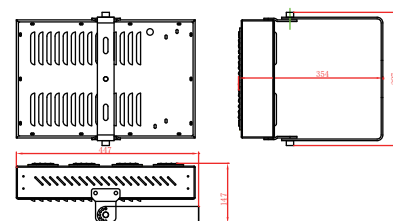
Unit:mm



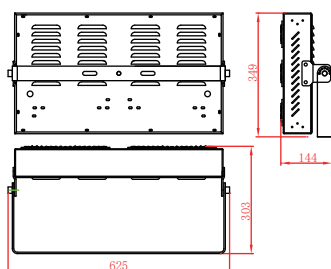
100W



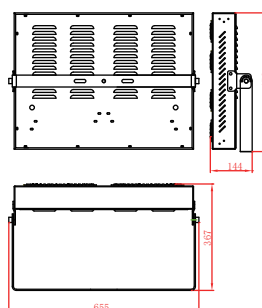
150W



200W



300W



400W

Take the next step

See how Litan LED luminaires can provide a complete solution for your area lighting needs. Visit www.litianled.com more information.