

LED Outdoor Security Light

LT-XT-06 Installation Instructions



LI-TIAN LIGHTING



IMPORTANT

READ CAREFULLY BEFORE INSTALLING FIXTURE. RETAIN THESE INSTRUCTIONS FOR FUTURE REFERENCE.

Fixtures must be wired in accordance with the National Electrical Code and all applicable local codes. Proper grounding is required for safety. THIS PRODUCT MUST BE INSTALLED IN ACCORDANCE WITH THE APPLICABLE INSTALLATION CODE BY A PERSON FAMILIAR WITH THE CONSTRUCTION AND OPERATION OF THE PRODUCT AND THE HAZARDS INVOLVED.

WARNING: Make certain power is OFF before installing or maintaining fixture. No user serviceable parts inside.

INSTALLATION PREVIEW

ON-OFF WIRING METHOD:
Universal voltage driver permits operation at 120V through 277V, 50 or 60HZ.

Connect the GROUND wire from fixture to supply ground.
Connect the white fixture lead to the (-)COMMON supply lead
Connect the black fixture lead to the (-)LINE supply lead

LED Outdoor Security Light

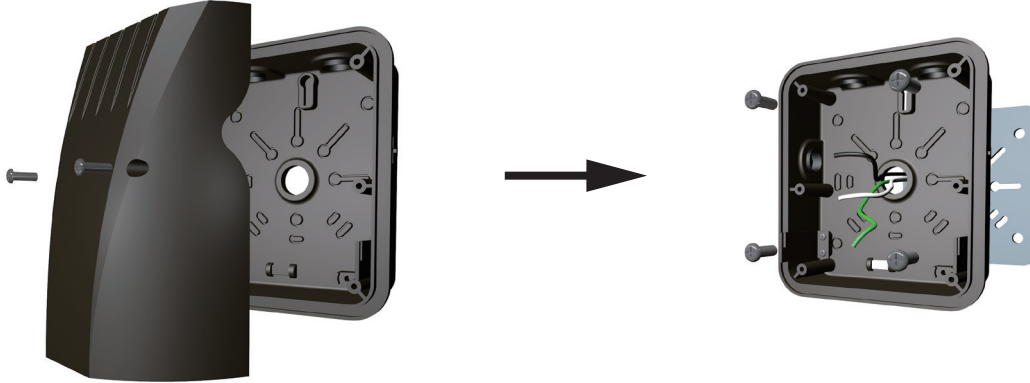
LT-XT-06 Installation Instructions



LI-TIAN LIGHTING

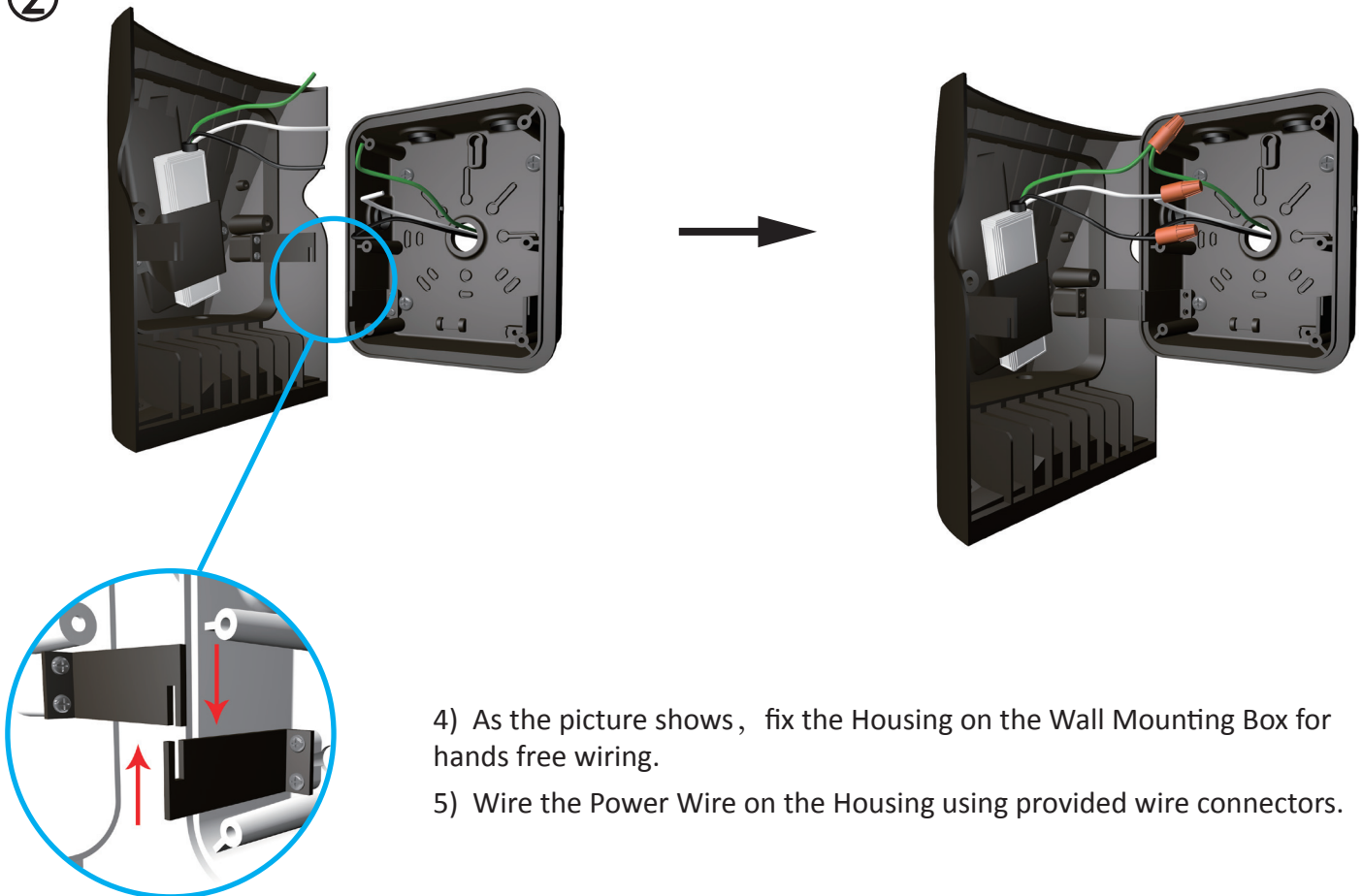
INSTALLATION STEPS

①



- 1) Loosen the Surface Screw and open the Housing. Knock out appropriate Slots when mounting to Junction Box. (Not supplied)
- 2) Using the Leveling Bubble in the Wall Mounting Box and level it.
- 3) Feed supply wires through Junction Box, Gasket and Wall Mounting Box. Check the Gasket is fully sealed.

②



- 4) As the picture shows, fix the Housing on the Wall Mounting Box for hands free wiring.
- 5) Wire the Power Wire on the Housing using provided wire connectors.

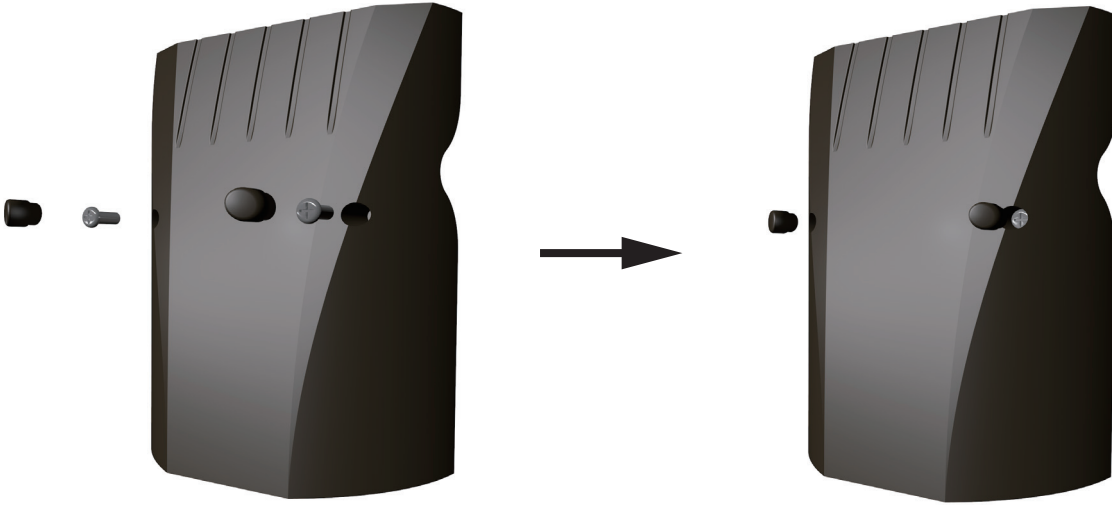
LED Outdoor Security Light

LT-XT-06 Installation Instructions



LI-TIAN LIGHTING

③



6) Place the Wired Housing over the Wall Mounting Box, close and tighten the Surface Screw and Plastic stopper. Check Door Gasket.

***Note:** These instructions do not cover all details or variations in equipment nor do they provide for every possible situation during installation, operation or maintenance.*

IMPORTANT

Do not attempt to service the LED driver for reduce the risk of electric shock. The use of accessory equipment may cause an unsafe condition. Do not use this product for other than intended use. Refer any servicing indicated by these checks to a Qualified Service Personnel.

CLEANING

CAUTION: Be sure fixture temperature is cool enough to touch. Do not clean or maintain while fixture is energized.

1. Lens should be washed in a solution of warm water and any mild, non abrasive household detergent, rinsed with clean water and wiped dry. Do not use chemicals to clean fixture.
2. Do not open fixture to clean the LED. Do not touch the LED.

TROUBLESHOOTING

1. Check that the line voltage at fixture is correct. Refer to wiring directions.
2. Be sure the fixture is grounded properly.