

# LTOK Series LED Floodlight



LI-TIAN LIGHTING



LED Floodlights of LTOK Series are designed to meet your most challenging specifications while keeping your project budget intact. you can choose the fixture to meet your exact lighting requirements, and two housing sizes scaled to the lumen packages ensure you never buy more fixture than you need. Every configuration is designed for easy installation and aiming, and long-life LEDs make shrink maintenance costs to near zero.



■ **Super High Efficacy**  
Up to 150lm/W

■ **Polycarbonate Optics**  
Shatterproof, non-yellowing



■ **Air flow technology**  
keeps running cool for optimal operation

■ **Adjustable Arm bracket**  
Convenient adjustable 0-180°

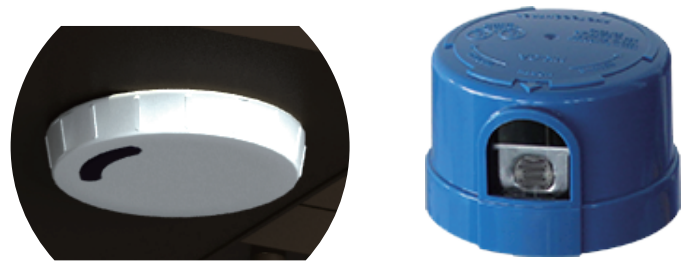


■ **IP66 rating**  
Protected against powerful water jets

# 480V

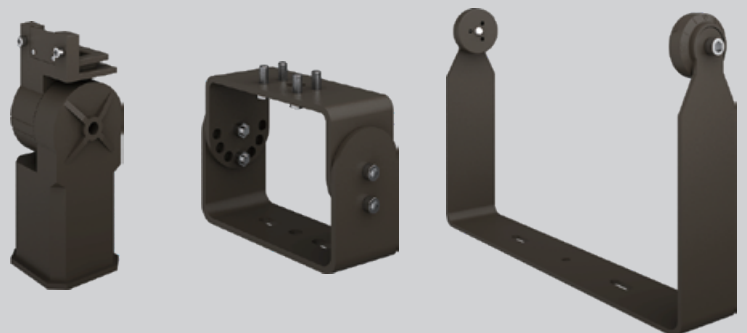
- 480 volt option  
The floodlight is available in 480 Volt option

- Dimmable  
0-10V dimming capability



- Photocell and Sensor  
saves you even more energy

- Simple Installation  
Ease of ordering retrofit accessories



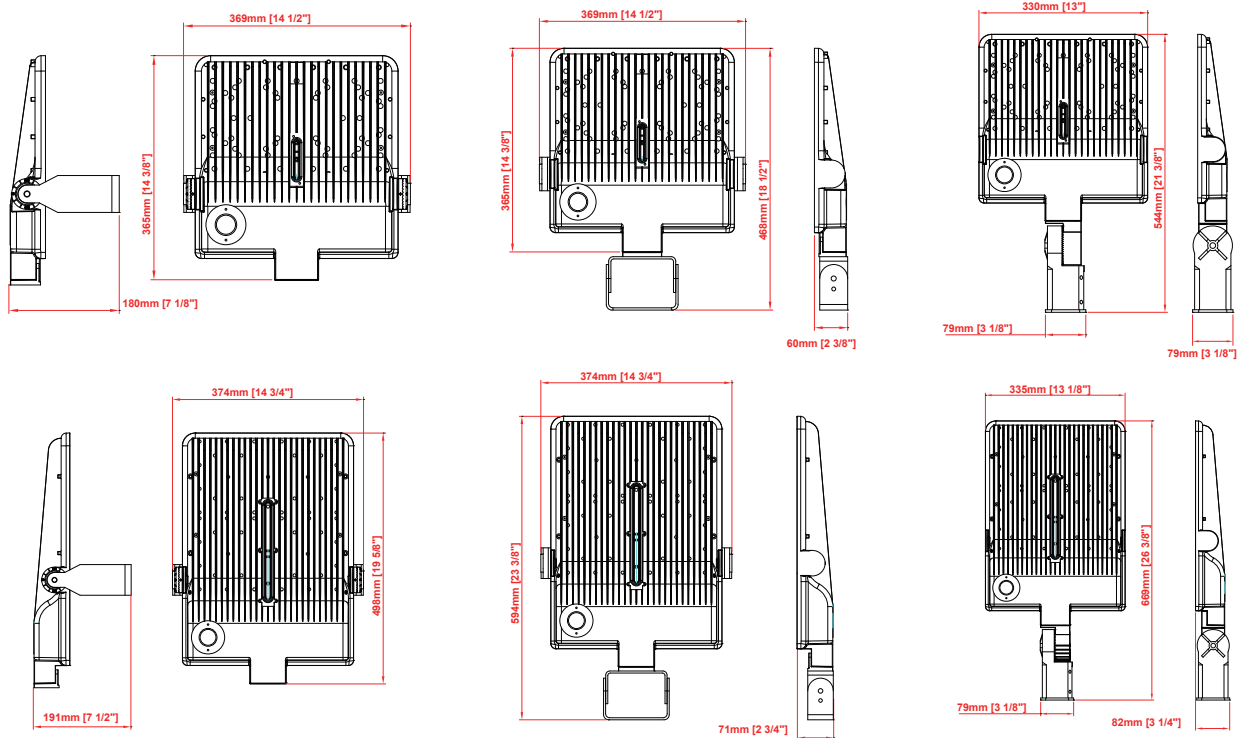
- 5-year warranty



# Product Parameters

Lumens	150LM/W		
power	100W (CREE 3030-144pcs)	150W (CREE 3030-200pcs)	200W (CREE 3030-280pcs)
	240W (CREE 3030-368pcs)	300W (CREE 3030-464pcs)	
Color Temperature	WW-30K Warm White 3000K (70 CRI)	NW-40K Neutral White 4000K (70 CRI)	CW-50K Cool White 5000K (70 CRI)
Distribution	T5=TYPE V 150° x 150°		
Voltage	UNV Universal 120-277V		HVU Universal 347-480V
Motion sensing	N3=NEMA 3-PIN Twistlock Photocontrol Receptacle N7=NEMA 7-PIN Twistlock Photocontrol Receptacle MSP=Integrated Sensor for ON/OFF Operation, 12' - 50' Mounting Height		
Mounting	UBM=U Bracket mounting SFM=Slip Fitter mounting TM=Trunnion mounting		
Dimming controls (standard)	1-10V Dimming	Resistor Dimming	Pwm Three-in-one Dimming
Finish	Bronze		

# Product Size



## Take the next step

See how Litian LED luminaires can provide a complete solution for your area lighting needs. Visit [www.litianled.com](http://www.litianled.com) more information.