

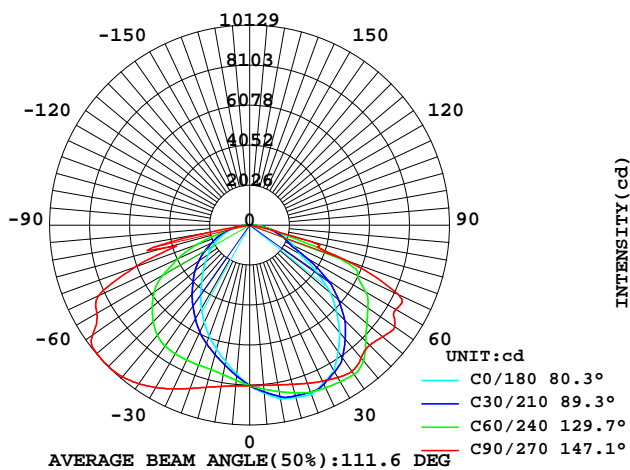
STREETLIGHT PHOTOMETRIC TEST REPORT

Report number:

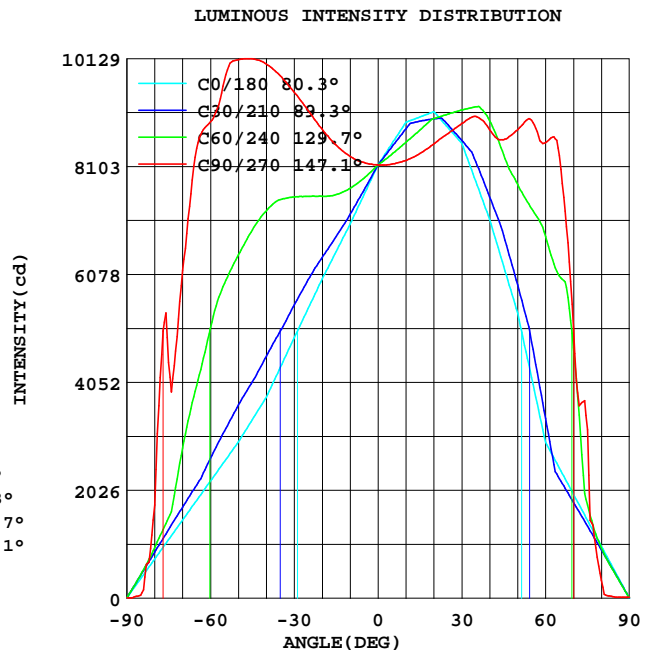
MANUFACTURER: LI TIAN	Address:	
NAME: LTOX-200W	TYPE:	WEIGHT:
SPECIFICATION:	DIMENSION:	SERIAL No.:

MODEL:		Imax(cd):	10702	Effective Flux(lm):	28718.6
NOMINAL POWER(W):	196	MAXIMUM(C, γ):	105, 53.5	EEI	0.091
RATED VOLTAGE(V):	220	EFFICIENCY(%):	100.0	Voltage(V)	219.3
NOMINAL FLUX(lm):	29263.4	η street_up(%):	0.0	Current(A)	0.880
TEST FLUX(lm):	29263	η street_down(%):	51.8	Power(W)	190.8
LAMPS QUANTITY:	1	η house_up(%):	0.0	Power Factor	0.988
TOTAL FLUX(lm):	29263	η house_down(%):	48.2	EEFICIENCY(lm/W)	153.3

INTENSITY DISTRIBUTION DIAGRAM
IN C PLANS



INTENSITY DISTRIBUTION DIAGRAM
IN C PLANS



Test System:HOP00 HPG1900
Temperature:25.3DEG
Operators:
Test Date:2018年11月18日

Test Set: 5.0deg/s B-Beta (TYPE B)
Humidity:65.0%
Test Distance:10.500 m
Remarks:

Color Temperature Data List

Report number:

MANUFACTURER: LI TIAN	Address:	
NAME: L TOK-200W	TYPE:	WEIGHT:
SPECIFICATION:	DIMENSION:	SERIAL No.:

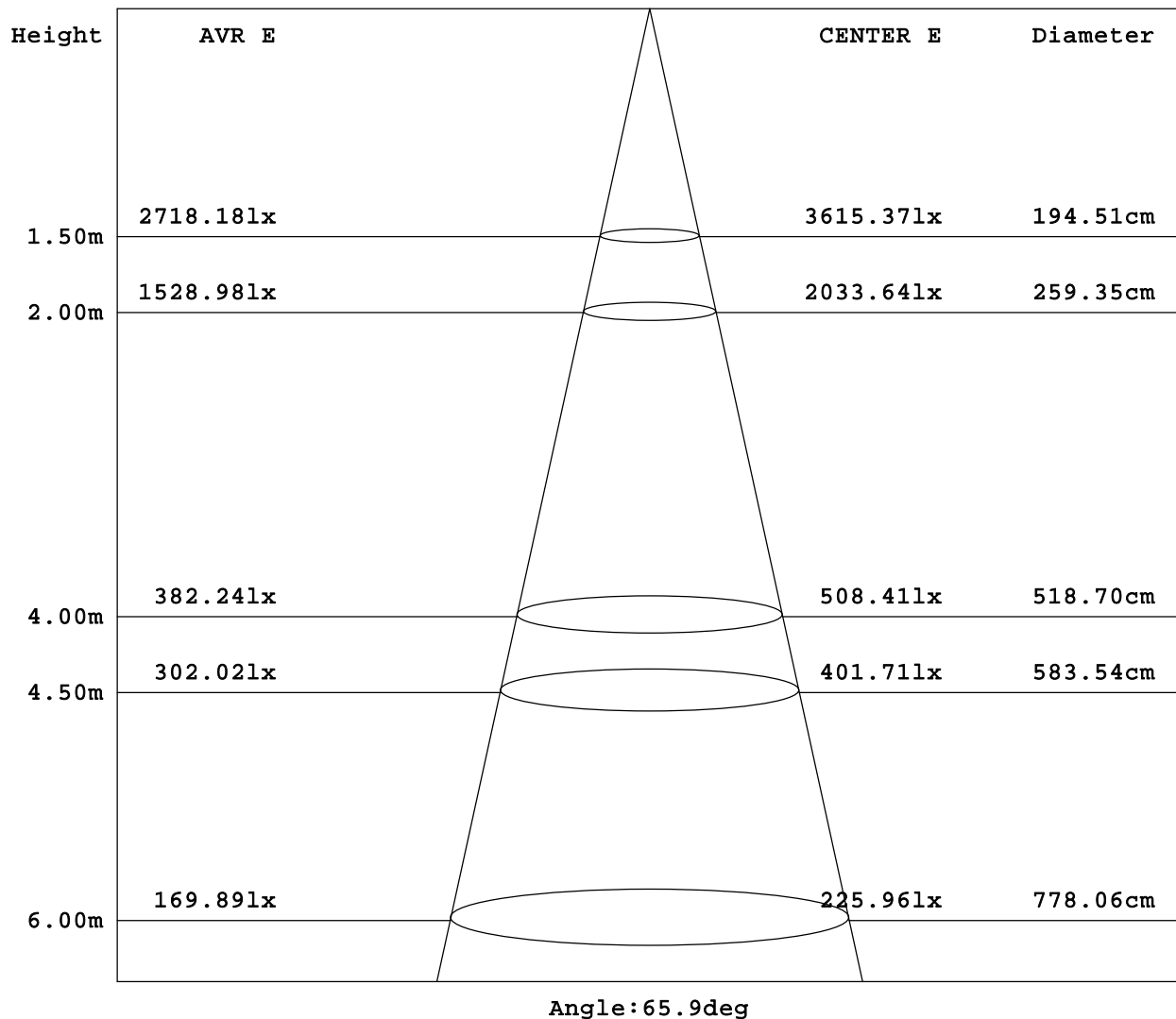
Test System:HOP00 HPG1900
Temperature:25.3DEG
Operators:
Test Date:2018年11月18日

Test Set: 5.0deg/s B-Beta (TYPE B)
Humidity:65.0%
Test Distance:10.500 m
Remarks:

AVERAGE AND CENTER E Figure

Report number:

MANUFACTURER: LI TIAN	Address:	
NAME: LTOK-200W	TYPE:	WEIGHT:
SPECIFICATION:	DIMENSION:	SERIAL No.:



Test System: HOPOO HPG1900
 Temperature: 25.3DEG
 Operators:
 Test Date: 2018年11月18日

Test Set: 5.0deg/s B-Beta (TYPE B)
 Humidity: 65.0%
 Test Distance: 10.500 m
 Remarks:

ZONAL FLUX DIAGRAM

Report number:

MANUFACTURER: LI TIAN	Address:	
NAME: LTOK-200W	TYPE:	WEIGHT:
SPECIFICATION:	DIMENSION:	SERIAL No.:

γ	C0	C45	C90	C135	C180	C225	C270	C315	γ	zone	total
5.0	757.8	776.2	817.6	844.7	853.4	841.2	814.7	774.9	0- 5	193.8	193.8
10.0	702.3	742.3	829.4	880.2	893.4	869.8	821.8	740.9	5- 10	579.1	772.9
15.0	650.8	713.3	850.1	914.1	903.3	893.1	834.7	712.2	10- 15	959.4	1732
20.0	599.3	689.6	880.3	927.9	913.1	897.9	852.8	691.0	15- 20	1330	3062
25.0	544.2	667.0	915.5	941.6	883.5	902.3	872.0	672.9	20- 25	1684	4747
30.0	489.2	638.8	949.5	938.8	854.0	891.2	890.9	647.6	25- 30	2007	6754
35.0	433.3	602.4	980.6	919.9	782.4	864.3	904.3	614.1	30- 35	2287	9041
40.0	377.5	559.3	1003	892.7	710.8	827.6	879.4	576.0	35- 40	2499	11539
45.0	335.5	515.6	1013	835.0	623.0	755.4	860.6	529.5	40- 45	2627	14166
50.0	293.6	460.9	1011	773.0	535.2	660.3	879.4	460.5	45- 50	2685	16851
55.0	256.8	403.8	973.2	690.9	413.9	550.5	897.3	397.3	50- 55	2681	19532
60.0	220.1	336.3	894.1	602.9	292.6	455.7	854.9	337.5	55- 60	2548	22080
65.0	183.5	255.9	844.5	453.4	243.9	317.2	830.3	267.5	60- 65	2357	24437
70.0	146.8	183.0	615.4	340.2	195.2	212.4	509.3	197.7	65- 70	2037	26474
75.0	110.2	138.8	442.7	274.0	146.5	165.9	316.5	151.5	70- 75	1376	27850
80.0	73.68	93.66	174.8	194.0	97.80	114.3	33.74	103.0	75- 80	878.0	28728
85.0	37.07	47.34	5.843	100.5	49.09	58.61	2.149	52.43	80- 85	408.0	29136
90.0	0.463	0.430	1.124	0.386	0.386	0.419	1.874	0.617	85- 90	127.3	29263
95.0									90- 95		
100.0									95-100		
105.0									100-105		
110.0									105-110		
115.0									110-115		
120.0									115-120		
125.0									120-125		
130.0									125-130		
135.0									130-135		
140.0									135-140		
145.0									140-145		
150.0									145-150		
155.0									150-155		
160.0									155-160		
165.0									160-165		
170.0									165-170		
175.0									170-175		
180.0									175-180		
DEG	LUMINOUS INTENSITY:×10cd									UNIT:lm	

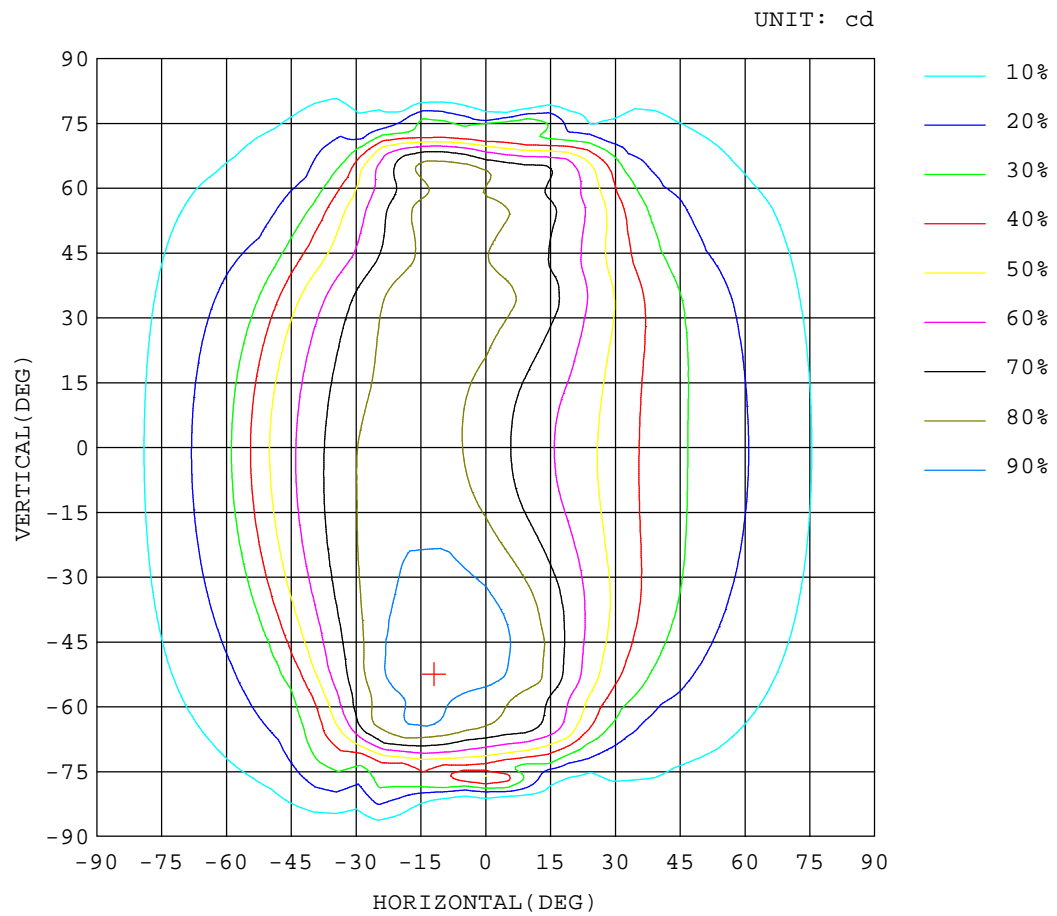
Test System:HOP00 HPG1900
 Temperature:25.3DEG
 Operators:
 Test Date:2018年11月18日

Test Set: 5.0deg/s B-Beta (TYPE B)
 Humidity:65.0%
 Test Distance:10.500 m
 Remarks:

ISOCANDELA DIAGRAM

Report number:

MANUFACTURER: LI TIAN	Address:	
NAME: LTOK-200W	TYPE:	WEIGHT:
SPECIFICATION:	DIMENSION:	SERIAL No.:



Test System:HOP00 HPG1900
Temperature:25.3DEG
Operators:
Test Date:2018年11月18日

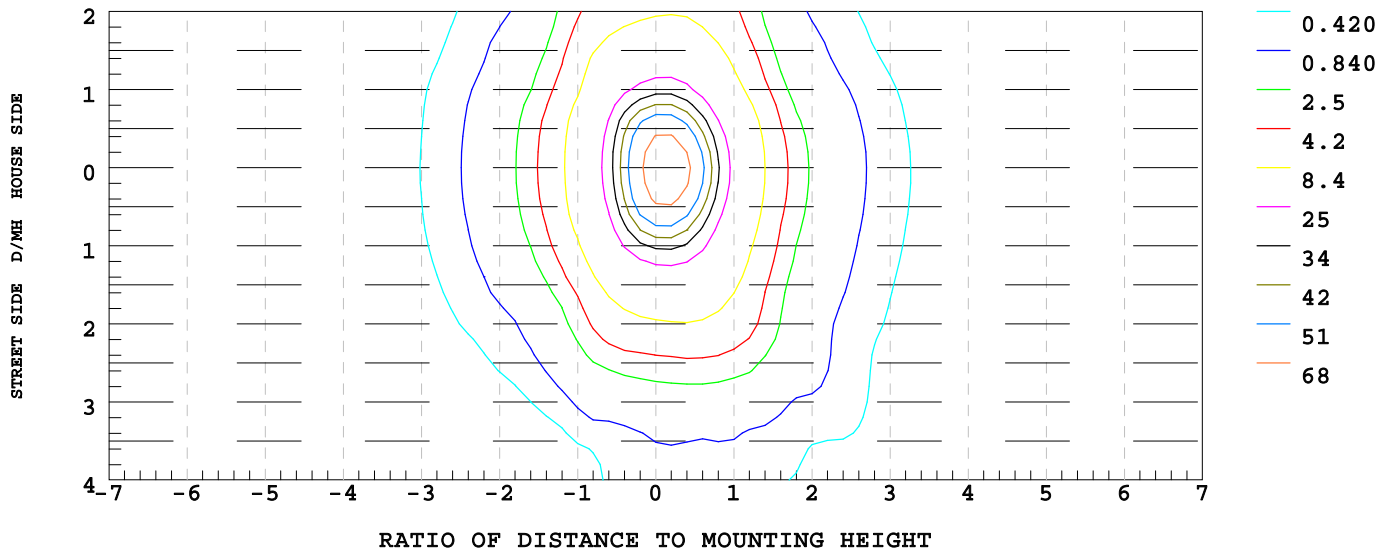
Test Set: 5.0deg/s B-Beta (TYPE B)
Humidity:65.0%
Test Distance:10.500 m
Remarks:

ISOLUX DIAGRAM

Report number:

MANUFACTURER: LI TIAN	Address:	
NAME: LTOK-200W	TYPE:	WEIGHT:
SPECIFICATION:	DIMENSION:	SERIAL No.:

ILLUMINANCE AT MH=10 m, Enadir = 81.35 lx



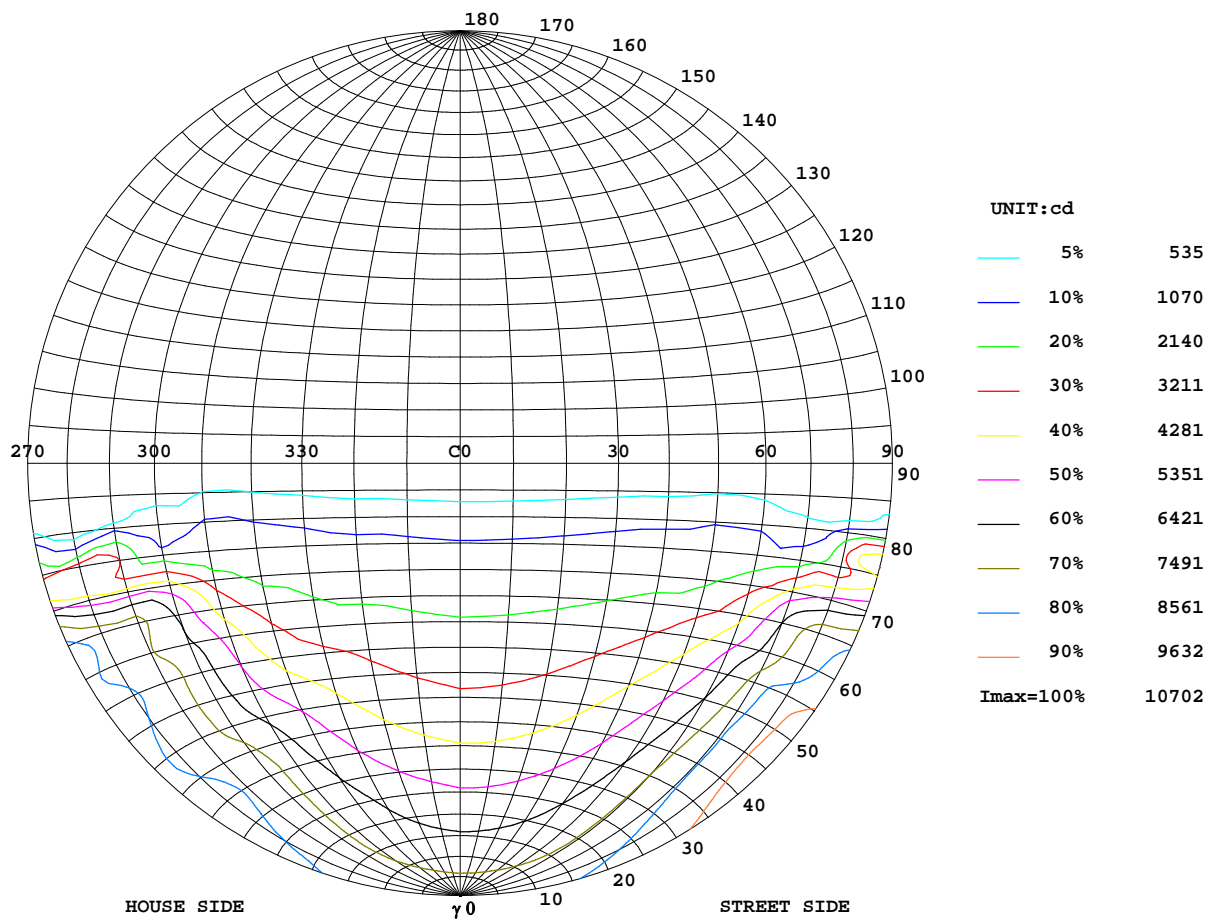
Test System:HOP00 HPG1900
Temperature:25.3DEG
Operators:
Test Date:2018年11月18日

Test Set: 5.0deg/s B-Beta (TYPE B)
Humidity:65.0%
Test Distance:10.500 m
Remarks:

ISOCANDELA DIAGRAM

Report number:

MANUFACTURER: LI TIAN	Address:	
NAME: LTOK-200W	TYPE:	WEIGHT:
SPECIFICATION:	DIMENSION:	SERIAL No.:



Test System:HOP00 HPG1900
Temperature:25.3DEG
Operators:
Test Date:2018年11月18日

Test Set: 5.0deg/s B-Beta (TYPE B)
Humidity:65.0%
Test Distance:10.500 m
Remarks:

Uncorrected UGR Table

Report number:

MANUFACTURER: LI TIAN						Address:				
NAME: LTOK-200W						TYPE:			WEIGHT:	
SPECIFICATION:						DIMENSION:			SERIAL No.:	
ceiling/cavity	0.7	0.7	0.5	0.5	0.3	0.7	0.7	0.5	0.5	0.3
walls	0.5	0.3	0.5	0.3	0.3	0.5	0.3	0.5	0.3	0.3
working plane	0.2	0.2	0.2	0.2	0.2	0.2	0.2	0.2	0.2	0.2
Room dimensions						Viewed crosswise				
x = 2H y = 2H						Viewed endwise				
3H						24.5	26.1	24.7	26.3	26.5
4H						25.9	27.4	26.2	27.6	27.8
6H						26.5	27.9	26.9	28.2	28.5
8H						27.1	28.4	27.4	28.7	29.0
12H						27.3	28.6	27.6	28.8	29.1
						27.4	28.7	27.8	29.0	29.3
4H 2H						31.4	33.0	31.7	33.2	33.4
3H						33.8	35.3	34.2	35.6	35.8
4H						34.4	35.8	34.7	36.1	36.3
6H						35.1	36.4	35.4	36.7	37.0
8H						35.1	36.4	35.4	36.6	36.9
12H						35.0	36.3	35.4	36.6	36.9
4H 2H						31.3	32.7	31.7	33.0	33.3
3H						33.9	35.1	34.2	35.4	35.7
4H						34.5	35.6	34.9	35.9	36.3
6H						35.2	36.2	35.6	36.5	36.9
8H						35.2	36.1	35.6	36.5	36.9
12H						35.1	36.0	35.6	36.4	36.8
8H 4H						34.5	35.4	34.9	35.8	36.1
6H						35.2	36.0	35.6	36.4	36.8
8H						35.2	35.9	35.7	36.3	36.8
12H						35.2	35.8	35.7	36.2	36.7
12H 4H						34.4	35.3	34.9	35.7	36.1
6H						35.2	35.9	35.6	36.3	36.7
8H						35.2	35.8	35.7	36.3	36.7
Variations with the observer position at spacings:										
S = 1.0H		+ 0.2 / - 0.3				+ 0.1 / - 0.1				
1.5H		+ 0.2 / - 0.2				+ 0.3 / - 0.3				
2.0H		+ 0.3 / - 0.6				+ 1.3 / - 1.7				

CIE Pub.117 Corrected 29263 lm Total Lamp Luminous Flux.(8log(F/F0) = 11.7)

Test System:HOP00 HPG1900
 Temperature:25.3DEG
 Operators:
 Test Date:2018年11月18日

Test Set: 5.0deg/s B-Beta (TYPE B)
 Humidity:65.0%
 Test Distance:10.500 m
 Remarks: